

DCV Series

Check Valve

Directional Control Valve

DCV Series



- Low minimum speed (crank pressure)
- Excellent flow characteristics

How to Order

DCV 2

1

2

2

*

3

02

4

1 Product Name

DCV : Check Valve

2

Basic Size

Size	Basic port
2	1/4
4	1/2

3 Screw Type

Blank : Rc

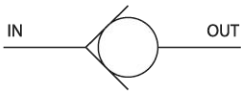
N : NPT

G : G

4 Port Size

Size	port size	series
01	1/8	DCV2
02	1/4	DCV2/DCV4
03	3/8	DCV4
04	1/2	DCV4

Symbol



Specifications

Fluid	Air				
Max. Operating Pressure	1.0				
Proof Pressure	1.5				
Min. Operating Pressure	0.02				
Ambient & Fluid Temp.	-5 to 60°C (nonfreezing)				
Series	DCV2		DCV4		
Port Size	1/8	1/4	1/4	3/8	1/2
Weight	128		44		
Effective Area	22	35	41	80	116